

Setup

=====

WinCT (Windows Communication Tools)

WinCT is a program for transmitting data from an A&D balance to a computer.
 Below are instructions for installation and use of WinCT.

=====

1. System Requirements

Computer OS Microsoft Windows 10 / Windows 8.1 / Windows 7 / Windows Vista

Port differs depending on the connection method.

| Connection method | Port |
|----------------------------|------------------------------|
| RS-232C cable | RS-232C port (COM port)*1 |
| USB cable | USB port *2 |
| Bluetooth (AD-8529PC-W) | USB port *2 |

*1 If the computer has no COM port, a Serial/USB converter is available as an accessory to add a COM port on the computer. A cable is also attached for connecting the balance.

Product, Accessory

| | Balance has 25 pin RS-232C | Balance has 9 pin RS-232C |
|----------------------------|-------------------------------|------------------------------|
| Using Serial/USB converter | AX-USB-25 | AX-USB-9P |
| Using Bluetooth converter | AD-8529PC-W AX-K05363-30 | AD-8529PC-W |

Balance An A&D balance with an RS-232C or USB *2 interface

Cable An RS-232C cable or USB cable

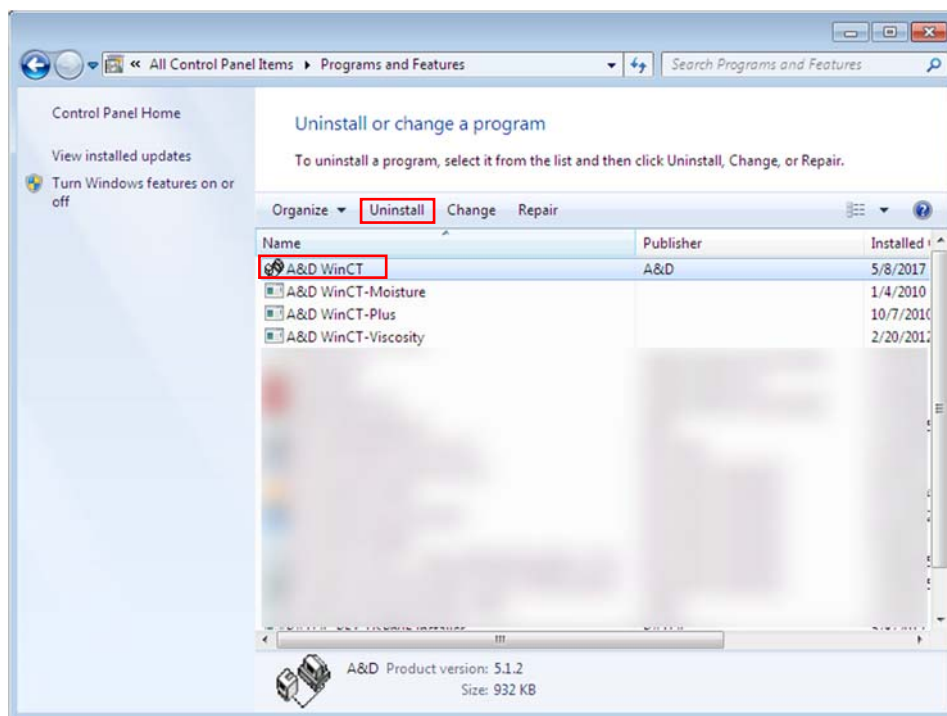
*2 USB Bidirectional communication required

CAUTION

- Use an English version of Windows for proper operation of WinCT.
- If WinCT is operated on Windows except for an English version, the computer may show incorrect characters of data which is already stored before installing WinCT.
- Back up your important data in the computer before installing WinCT.

2. Installation Instructions

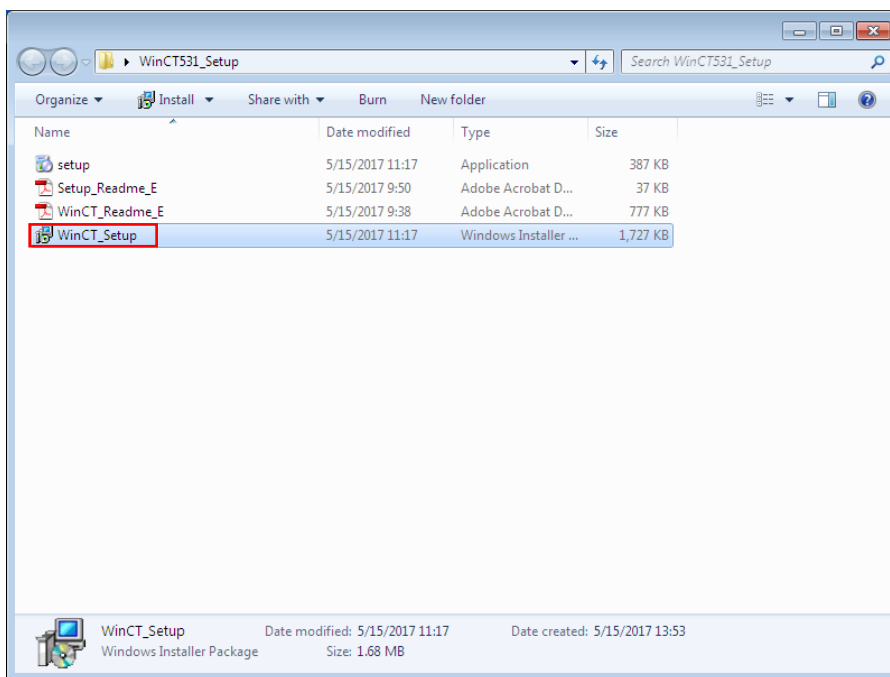
Step 1 If a previous version of WinCT is installed on the computer,uninstall the previous version of WinCT.



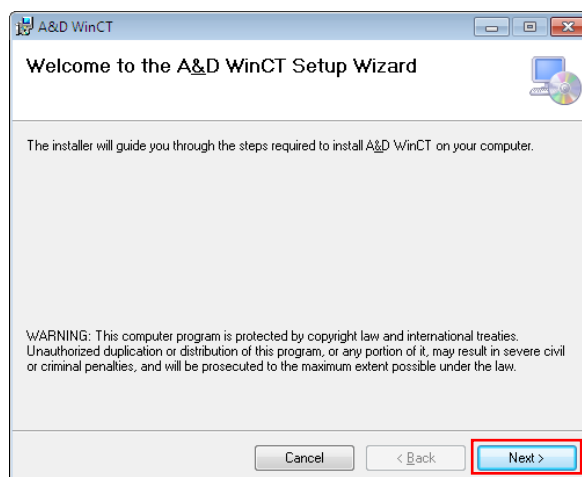
Step 2 Close all open applications in Windows.

Step 3 Install WinCT.

Run WinCT_Setup.msi.



Step 4 Install WinCT following the instructions on the screen.



3. Starting WinCT

Select either RsCom or RsKey or RsWeight from the START menu. The default menu address is [Start] - [program] - [A&D WinCT]. You will find the instruction manual in the Readme file under [A&D WinCT].

RsCom This window is able to transmit the weighing date using a text file format to a computer. This window also transmits commands for operating an A&D balance.

RsKey Weighing data is imported directly into an application, such as MS Excel. However, this window cannot be used to send commands to a balance.

RsWeight The weighing data can be retrieved from the balance and displayed in graph form on the monitor screen in real-time. Maximum, minimum, average, standard deviation and coefficient of variation values of data can be calculated and displayed.

CAUTION

- WinCT is a program for balances that use the A&D format. A&D does not guarantee performance or compatibility when other manufacture's balances are used with WinCT.
- If you have problems or questions about compatibility with third party software, contact the manufactures for information.

=====

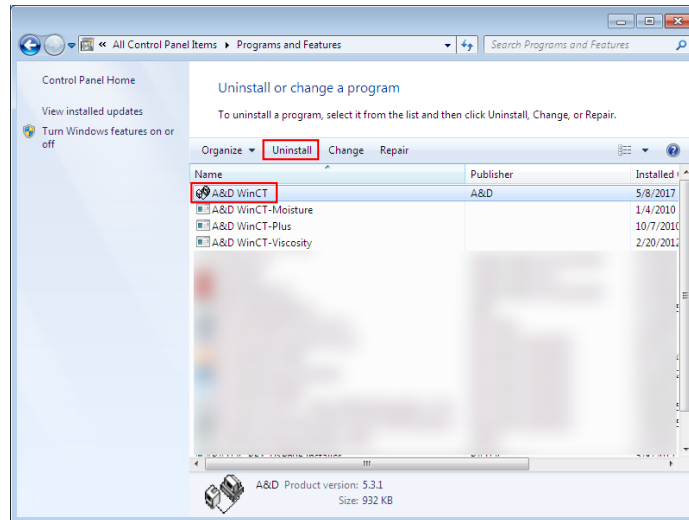
4. License Agreement and Limited Warranty

- WinCT is subject to change without notice and does not represent a commitment by A&D to support earlier versions or to make changes to support non standard computers.
- WinCT is intended for the transmission of the weighing data from an A&D balance to a PC, and command transmission for controlling the balance.
- Under copyright laws, the WinCT program may not be copied, in whole or part, without the consent of A&D, except as specified in the license agreement.
- WinCT should only be installed on the hard disk or peripheral storage devices of a computer connected to an A&D balance.
- A&D bears no liability for direct, indirect, special, incidental, or consequential damages resulting from any defect in the WinCT program or the readme file, even when advised of the possibility of such damage.
- A&D is not responsible or liable for the loss of any programs and/or data stored in the computer on which WinCT was installed, including the costs of recovering said lost programs or data.

Microsoft, Windows, Excel and Word are trademarks or registered trademarks of Microsoft Corporation.

5. Uninstall Instructions

Use the "Add/Remove Programs" icon in the control panel to remove this program from your computer.



End of Setup Text
